

# MILL CREEK-WABASH RIVER WATERSHED PROJECT

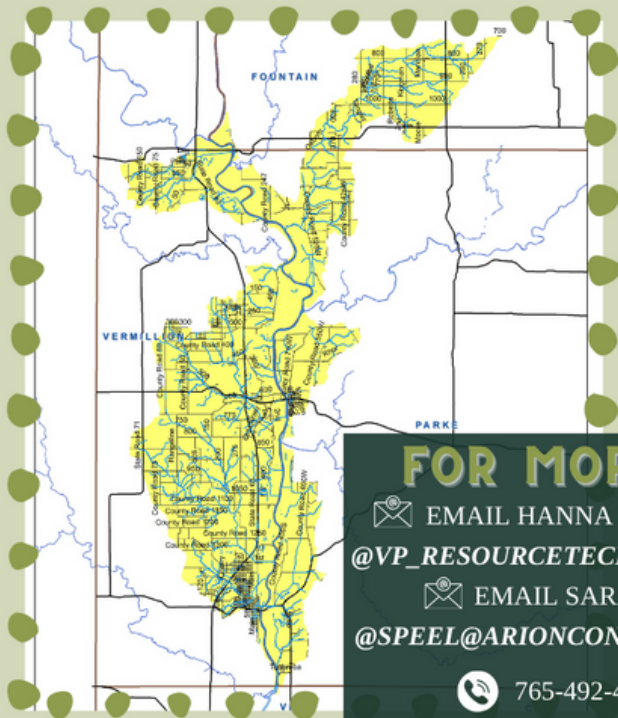
FUNDED BY IDEM CLEAN WATER ACT SECTION 319 GRANT

## WHAT IS A WATERSHED?

A watershed is the land area that drains to a common point, such as a location on a river. All of the water that falls on a watershed will move across the landscape collecting in low spots and drainage ways until it moves into the waterbody of choice. A healthy watershed is vital for a healthy river, and a healthy river can enhance the community and helps maintain a healthy local economy.

## WHY THIS WATERSHED?

The MC-WR project's focus is to help protect and improve water quality within the watershed. The streams included in this watershed drain into the Wabash River and could have an impact on the water quality. Our goal is to monitor and gather more information to better understand the impacts it has on the river.

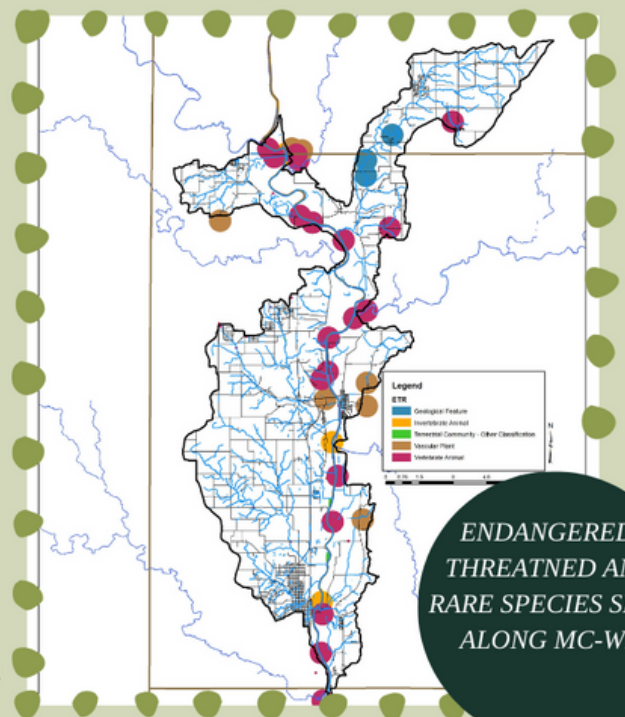


### FOR MORE INFO

EMAIL HANNA GARRIOTT  
@VP\_RESOURCESTECH@IASWCD.COM  
EMAIL SARA PEEL  
@SPEEL@ARIONCONSULTANTS.COM  
765-492-4280

## PROJECT BENEFITS

- Flood Control**  
Provides designated areas for water to pool during large rain events
- Natural Drainage**  
Keeps Water flowing. Prevents erosion and water backflow in urban areas.
- Water Filtration**  
Aides in cleaning wastewater while consuming less energy to do so.
- Recreation**  
Many activities include fishing, kayaking, canoeing and tubing on lakes and creeks
- Economic Impact**  
Increase property values. Recreation activities drive local businesses' for things like canoe rentals and fishing equipment.
- Habitat**  
Provides natural habitat for both plants and animals, drawing wildlife to the area



ENDANGERED,  
THREATENED AND  
RARE SPECIES SEEN  
ALONG MC-WR

# ENDANGERED, THREATENED, RARE SPECIES HIGHLIGHT



GLADE MALLOW

*Napaea dioica*, also known as Glade Mallow is endemic to the Midwest, usually found in river bottom prairies, soggy thickets, low areas along streams and depressions along railroads. It is a distinctive species due to the separate male and female flowers and size and shape of the leaves. It is native to some parts of Illinois.



SEDGE WREN

Sedge Wren is a small and secretive passerine bird often found in wet grasslands and meadows. It is known to nest in tall grasses and sedges while feeding on insects. They face high threats due to destruction of their wetlands and wet meadows.

## UPCOMING EVENTS



February 7th- Wabash River Invasive Project Monthly Meeting @ 4pm



February 8th- Mill Creek Steering Committee meeting @ 10am



March 7th- Last collection day for water sampling

GO TO [VCSWCD.COM](http://VCSWCD.COM) FOR MORE INFO

CONSERVATION IS VALUABLE



HANNA, SHELBY, MELODY (PICTURED) AND ERIC ON AUGUST 7TH COLLECTING WATER SAMPLES AT ONE OF THE SITES FOR THE MC-WR WATERSHED DATA

## SPECIAL THANKS TO OUR PARTNERS

Bishop Grain Farms  
Ceres Solutions  
Fountain Co Commissioners  
Fountain Co Council  
Fountain Co SWCD  
Indiana State Department of Agriculture  
Lake Holiday Hideaway  
Parke Co Commissioners  
Parke Co SWCD  
USDA-NRCS

Purdue Extension- Vermillion Co  
Purdue Extension- Fountain Co  
Purdue Extension- Parke Co  
Swinford Farms  
The Nature Conservancy  
Vermillion Co Commissioners  
Vermillion Parks Department  
Vermillion Trails  
White Construction

